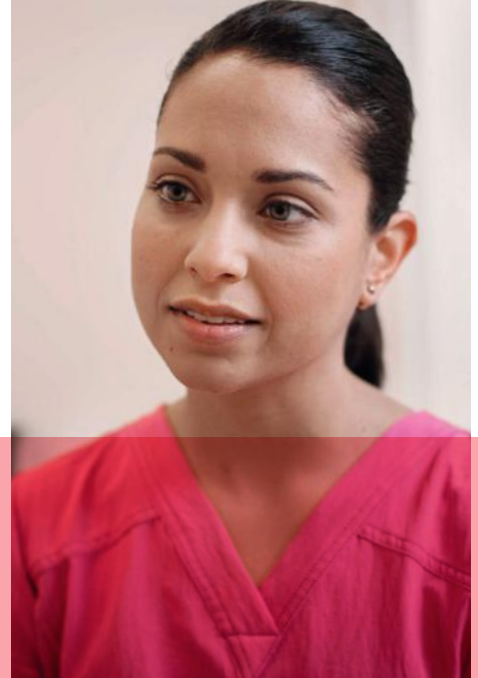




Knowing now matters.™



Alere Afinion™ CRP

Simple. Fast. Reliable.

Alere Afinion™ CRP is a rapid diagnostic test for quantitative determination of C-reactive protein (CRP). CRP testing at the point of care can aid in reducing diagnostic uncertainty, guiding antibiotic decision making during your patient's visit.¹

- Quantitative determination of CRP
- Laboratory-quality results in 4 minutes
- 1.5 µL capillary or venous whole blood sample, serum or plasma
- All in one test cartridge
- No sample preparation
- No manual calibration or maintenance requirements
- Ready to use liquid controls
- Connectivity solutions available

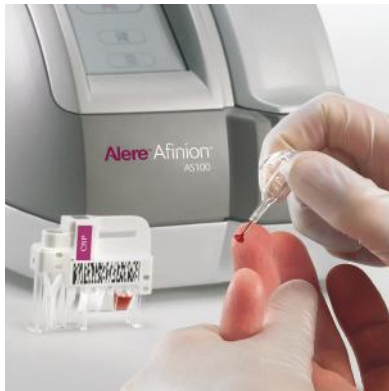


Would a CRP point of care result assist you in quickly identifying patients who may not require antibiotics alongside your standard clinical decision pathways?

Alere Afinion CRP Test

3-step procedure

1



Draw a small volume of sample into the sampling device

2



Insert the sampling device into the test cartridge

3



Place the cartridge into the analyzer. The result is displayed within minutes.

Measurement of CRP is important

CRP is produced by the liver following infection or injury to assist the body in recognising and removing pathogens or damaged host cells. Patients with serious bacterial infections usually show significantly elevated CRP levels whilst those with viral or self-limiting bacterial infections rarely have high CRP levels². Therefore, CRP is a valuable addition to the clinical consultation when deciding to prescribe antibiotics. A significantly increased CRP result may indicate the need for immediate antibiotic treatment. A normal or moderately increased CRP may support a diagnosis of a viral or self-limiting infection, providing valuable information to prevent unnecessary antibiotic prescription.

Clinical Guideline

The NICE Clinical Guideline for the diagnosis and management of community and hospital-acquired pneumonia in adults, recommend the use of the CRP point of care test to guide antibiotic prescribing in people without a clinical diagnosis of pneumonia as follows³:

- <20 mg/L offer no antibiotic therapy
- 20 - 100 mg/L consider delaying antibiotics
- >100 mg/L offer antibiotic therapy

Ordering Information

Catalogue no.	Description	Pack size
AF1116058	Alere Afinion CRP	15T
AF1116057	Alere Afinion CRP Quality Controls	2 x 0.5 mL vials (Level I & II)
AF1116049	Alere Afinion AS100 Analyzer	Each
Other tests available		
AF1116043	Alere Afinion ACR	15T
AF1116069	Alere Afinion Lipid Panel	15T
AF1116062	Alere Afinion HbA1c	15T



References

1. STTP, Ensuring the rational use of antibiotics in Primary Care using C-reactive protein, A Consensus Report, June 2015.
2. Melbye H, et al (2004) The course of C-reactive protein response in untreated upper respiratory tract infection. Br J Gen Pract. 54(506):653-658.
3. Pneumonia in adults: diagnosis and management. NICE Clinical Guideline. Published 3 December 2014. <https://www.nice.org.uk/guidance/cg191>

We look forward to demonstrating the Alere Afinion™ System. For more information or to schedule an on-site visit, please contact Alere.

Empowering appropriate antimicrobial use with rapid diagnostics
[TestTargetTreat.com](https://www.testtargettreat.com)



Australia
New Zealand

au.enquiries@alere.com
nz.enquiries@alere.com

1800 622 642 Free call in AUS
0800 466 951 Free call in NZ

alere.com.au
alere.co.nz