

AGILITY™

Redefining ELISA.

a·gil·i·ty /ə-ˈjil-ə-tē/ n.: **1.** the ability to respond, instantly and with great efficiency, to fluctuating conditions **2.** flexibility, coordination and ease of movement
3. ingeniously easy, fully automated ELISA processing



AGiLiTY™

free-dom /'frē-dəm/ n.: **1.** the quality of being unburdened by limits **2.** a state of empowerment in one's ability to make decisions and act upon them



Redefining Automation

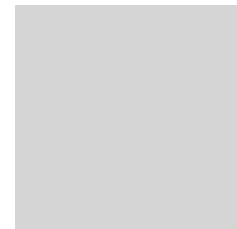
The DYNEX Agility™ utilizes the proven versatility of ELISA's core technology in a powerful, fully automated platform, for true ELISA optimization. State-of-the-art robotic processing delivers unparalleled precision while eliminating nearly all manual steps, so Agility™ is efficient and reliable – freeing you and your staff to be as productive as possible, while significantly reducing your cost per test.

- Full, walkaway processing from the beginning of testing
- Up to 16 assays stored on-board for simultaneous runs
- Flexible throughput allows up to 12 plates on-board at once
- Utilizes three precision robotic arms - one for sample pipetting, one for reagent pipetting and another for transporting plates and consumables, to obtain maximum process efficiency

Redefining Ease-of-Use

With an intelligent design that emphasizes simplicity, Agility™ provides an extremely intuitive, easy-to-use interface. And with continuous sample loading, workflow is streamlined for maximum efficiency and productivity.

- Eliminates most of ELISA's labor-intensive, front-end setup
- Reduces hands-on time by two-thirds of typical open systems
- Barcoding eliminates manual data input
- Assesses testing requirements and develops an efficient work list
- Comprehensive LIMS integration
- Continuous sample loading allows operators to begin loading and running microplates as they are ready, instead of all at once





Redefining Reagent Loading

Agility™ requires the least hands-on time in its category. In part, this advantage is made possible by utilizing the SmartKit™ packaging format, an innovative new direct-load solution to front-end ELISA kit preparation. SmartKits™ are a packaging enhancement, allowing everything to be loaded onto the system at the same time, in one easy step. All consumables for each assay are either loaded into a SmartKit™ carrier by the end-user or prepackaged in SmartKit™ format when purchased from our growing list of major reagent partners.

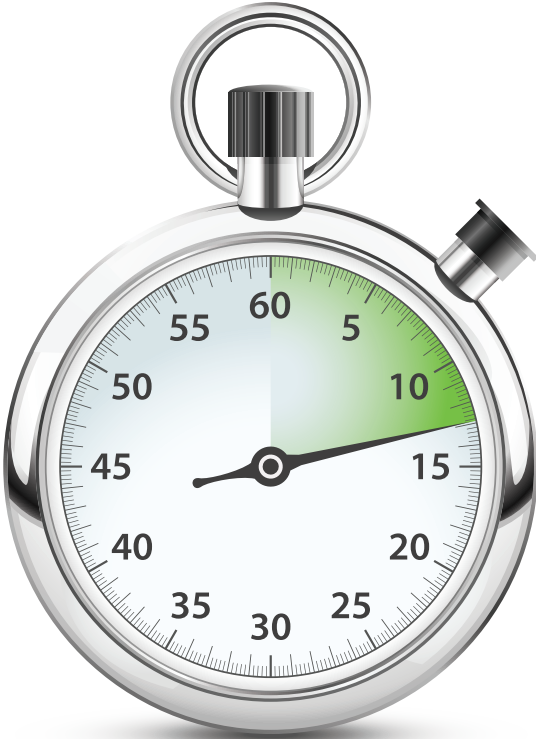
- Eliminates nearly all manual liquid-transfer steps
- Frees up significant labor time and allows for multitasking
- Illuminated, color-coded access positions allow simple loading of all kits, tips, microplates and other consumable items, preventing loading errors
- 2D barcodes printed on kits provide accurate and secure information
- Inventory tracking allows for maximum materials efficiency
- Consumables are stored on-board, including up to 16 SmartKits™

AGiLiTY™

ef·fi·cien·cy /i-'fi-shən-sē/ n.: **1.** effectiveness in operation, as measured by a comparison of production versus cost (as in energy, time and money) **2.** the minimization or elimination of waste

Redefining Hands-On Time

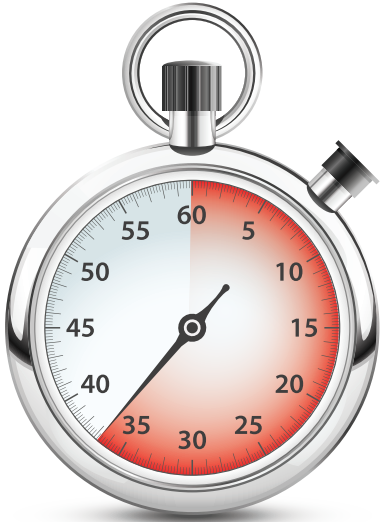
Agility's™ streamlined front-end preparation minimizes hands-on reagent loading versus traditional open systems, significantly reducing overall assay times. Walkaway, right away.



DYNEX Agility™

12:55
Minutes

- | | |
|----------------------------|--------------|
| 1. Scan Sample Barcodes | 03:00 |
| 2. Edit Worklist | 00:10 |
| 3. Enter Lot-Specific Data | 00:00 |
| 4. Load Microplates | 02:00 |
| 5. Load Reagents | 02:15 |
| 6. Load Wash Fluids | 03:00 |
| 7. Load Dilution Tubes | 00:15 |
| 8. Load Sample Tips | 00:45 |
| 9. Load Reagent Tips | 00:30 |
| 10. Empty Waste Bottle | 01:00 |



Traditional Open Systems

36:45
Minutes

- | | |
|----------------------------|--------------|
| 1. Scan Sample Barcodes | 03:00 |
| 2. Edit Worklist | 01:00 |
| 3. Enter Lot-Specific Data | 02:00 |
| 4. Load Microplates | 02:00 |
| 5. Load Reagents | 22:30 |
| 6. Load Wash Fluids | 03:00 |
| 7. Load Dilution Tubes | 01:00 |
| 8. Load Sample Tips | 00:45 |
| 9. Load Reagent Tips | 00:30 |
| 10. Empty Waste Bottle | 01:00 |



Redefining Productivity

The intuitive design of the Agility™ minimizes the potential for human error and greatly reduces the need for on-the-job training. The user interface enables effortless navigation, and the system supports several major error-proofing advances, including a comprehensive monitoring system to measure consumable levels and extensive barcoding to eliminate manual data entry.

Redefining Intelligence



Threshold Results
Threshold results allow programmable quality control equations based on arithmetic, statistical or Boolean calculations.

Washer Status
The washer status screen reports waste, washer fluid and clean fluid levels with easy-to-understand, quantitative graphics.

Dashboard
On a crystal clear touchscreen, the Agility™ dashboard is extremely easy-to-read, follow and understand. Intuitive graphics provide a full overview of every aspect of operation, from the number of tests scheduled to the amount of room remaining in waste containers.

AGiLiTY™

in·ge·nu·i·ty /in-juh-noo-i-tee/ n.: **1.** skill or cleverness in design
2. the ability to devise tools to best meet one's needs or desires



About DYNEX Technologies

The DYNEX product line, including the DSX® and DS2® instrument systems, has a proven track record of quality, innovation and reliability as a worldwide leader in fully automated systems and consumables.

DYNEX Agility™ Specifications

Dimensions	Metric	Non Metric
Width:	<1200 mm	48"
Depth:	<900 mm	36"
Height:	<1200 mm	48"
Footprint:	<1200 x 650 mm	48" x 26"
Bench Weight:	204 kg (max.)	450 lbs (max.)
Ship Weight:	340 kg (max.)	750 lbs (max.)
Noise:	Noise output <80 dB	

Power Requirements

Voltage:	100 – 240V automatic switching
Frequency:	50/60 Hz
Power Consumption:	Typically 500 VA (online UPS required)

Reader Specifications

Photometric Range:	0.000 to 3.500 OD
Spectral Range:	405 nm to 690 nm
Precision:	±0.010 OD at 0.000 to 0.500 OD <1% CV at 0.501 to 2.000 OD <1.5% CV at 2.001 to 2.500 OD
Accuracy:	±0.01 or 2.5% (0.000 to 3.000 OD) whichever is greater
Read Time:	<25 seconds, single wavelength <50 seconds, dual wavelength

Washer Specifications

Manifold Configuration:	8-way wash head
Programmable Volumes:	50-999 µl
Wash Containers:	4 wash bottles at 3.0 L, with quantitative level sensing
Clean Container:	1 wash bottle at 3.0 L, with quantitative level sensing
Waste Container:	10 L with quantitative level sensing
Residual Wash Volume:	<3 µl per well with dual-axis sweep in a flat bottom well
Dispense Precision:	≤5% CV (with 300 µl in a 96 well plate)

Incubator Specifications

Number of Incubators:	Up to 12 (Ambient / Elevated)
Temperature Range:	RT + 4° C to 45° C (Elevated Incubator) RT + 4° C (Ambient Incubator)
Temperature Accuracy:	± 1° C
Shaking:	14 Hz periodic or continuous

System Specifications

Number of Plates:	12 (additional continuous load capability)
Number of Sample Tubes:	200 (additional continuous load capability)
Number of Reagents:	Up to 16 different SmartKit™ Reagent Packs simultaneously (additional packs can be added using continuous load capability)
Number of Pipettes:	2 (sample + reagent)

Sample Pipetting Specifications

Sample Tip Size:	300 µl
Sample Pipetting Volume:	10-250 µl
Time to Dispense:	11 minutes (typical) 50 µl of 96 samples to plate from sample tubes or deep well plates
Sample Pipetting Precision:	≤3% CV (at any operating volume above 10 µl)
Sample Pipetting Accuracy:	± 2% of target volume
Dilution Range:	1 part in 199 one-stage dilution, 1 part in 39,601 two-stage dilution
Number of Sample Tips:	20 racks of 112 tips (additional racks can be added using continuous load capability)
Sample Tube Dimensions:	10-17 mm diameter external dimension, 45-100 mm depth

Reagent Pipetting Specifications

Reagent Tip Size:	1300 µl
Reagent Pipetting Volume:	20-1200 µl
Number of Reagent Tips:	1 rack of 98 tips (additional racks can be added using continuous load capability)
Reagent Pipetting Precision:	≤3% CV at 10 shots at any volume in operating range
Reagent Pipetting Accuracy:	±2% of target volume (single shot mode)

Regulatory Compliance

Electromagnetic Perturbation:	EMC Directive 2004/108/EC: EN 61326-2-6:2006, IEC 61326-1:2006
Electrical Safety:	BS EN 61010-1:2001, IEC 61010-1:2001, IEC 61010-2-101
Lead-free:	All components are RoHS compliant
IVDD:	CE marked per IVD 98/79/EC Directive

DYNEX Agility™ is undergoing the final stages of development.
All attributes and specifications presented herein are subject to change.

DYNEX is a registered trademark of DYNEX Technologies
and Agility™ and SmartKit™ are trademarks of
DYNEX Technologies.



ISO13485 CERTIFIED

AGiLiTY™

dy·nex /dī-neks/ n.: **1.** original pioneer of ELISA microplate technology
2. trusted, high quality brand for more than forty years **3.** innovator of new
and more effective ways for laboratory personnel to impact care



DYNEX Technologies
14340 Sullyfield Circle
Chantilly, VA 20151
Toll-free: 800-288-2354
Phone: 703-631-7800
Fax: 703-803-1441
www.DYNEXTechnologies.com