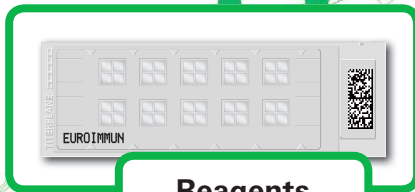




Complete automation of IIFT using EUROPattern



Reagents



Incubation



Data processing



Image recording



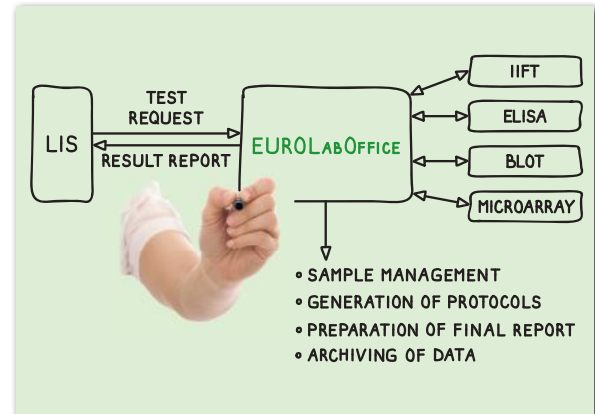
Pattern recognition





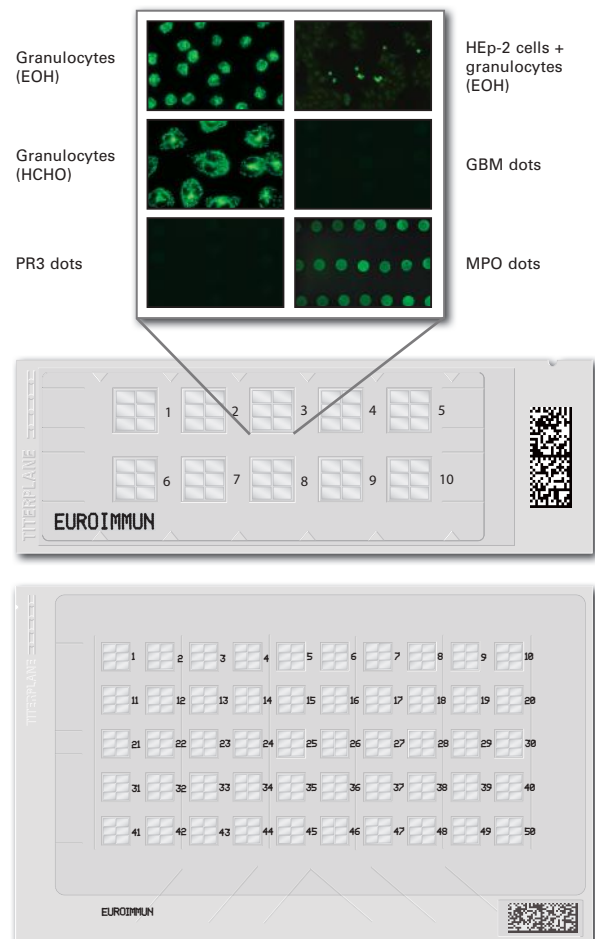
EUROLabOffice as control centre

- Integrity of data and results due to an entirely paper-less work process (quick, reliable, simple)
- Automated data processing and communication without transmission errors
- Automatic creation of electronic worklists
- Reporting support: day's results for a patient, patient history, search function, documentation and archiving
- Optimisation of existing laboratory processes, various expansion modules available
- Interface to LIS for two-way data exchange and optimal connection to EUROIMMUN devices



Quality meets functionality – EUROIMMUN reagents

- BIOCHIP technology allows:
 - multiparameter analysis: various substrates are combined on one test field as mosaics
 - high lot consistency for excellent reproducibility
- Slides are equipped with a matrix code for maximum reliability and traceability
- ANA diagnostics: HEp-20-10 cells show more than 150 mitoses per test field for optimal interpretability
- SLE diagnostics: two Crithidia IIFT (CLIFT) are available, either conventional or highly sensitive (now suitable for screening)
- ANCA diagnostics:
 - combination of ethanol- and formalin-fixed granulocytes for differentiation of vasculitides from chronic inflammatory bowel diseases
 - monospecific confirmation of results with PR3/MPO dots (EUROPLUS)
 - combination of HEp cells and granulocytes on one BIOCHIP allows differentiation between ANA and ANCA





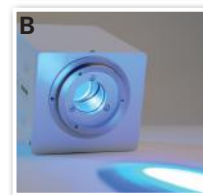
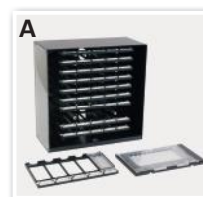
Highly flexible and efficient incubation solutions

- **Sprinter XL: IIFT and ELISA processing on one system for medium to high throughput**
 - up to 240 samples, 30 slides per run
 - sample identification via barcode
 - slide identification using the integrated matrix code reader
 - modern washing technology based on flooding for brilliant fluorescence signals
 - four washable needles
- **EUROLabLiquidHandler: efficient IIFT processing for high-throughput laboratories**
 - up to 500 samples per run
 - faster availability of results with comparable or even less hands-on time compared to conventional full automation
 - optional support of ELISA, immunoblot and liquid handling jobs
 - simple and reliable operation due to intuitive software and automatic identification of test components and labware used in the device
 - up to 10 washable needles



EUROPattern Microscope

- Magazine for 500 fields (A) with automatic supply of slides allows long walk-away periods
- Fastest system on the market: up to 200 test fields in one hour (18 seconds per test field)
- Matrix code reader: mix-up of slides can be excluded
- Controlled LED (B) for > 50,000 hrs of constant light intensity; documented quality control
- High-resolution cameras
- Various objectives with autofocus
- RealDrive hand control (C) for convenient handling such as with a normal microscope
- Eye-pieces available on request





On-screen diagnostics with EUROPattern

ANA

- Identification of seven patterns (homogeneous, granular, nuclear dots, centromeres, nucleolar, nuclear membrane and cytoplasmic) and any combination thereof
- Verification of all negative results with one mouse click
- Images of all substrates and dilutions are displayed together in one screen view and consolidated into one final report
- Preliminary findings for all results available (IIFT, immunoblot, ELISA)
- Representative mitoses in late metaphase are identified and labelled
- Pattern and titer suggestions with confidence values
- Direct request of follow-up analyses
- Feedback function for specialist support from EUROIMMUN AG
- FDA controlled and labelled titer estimations based on three dilutions. Optionally, the titer can be determined from one dilution only

ANCA

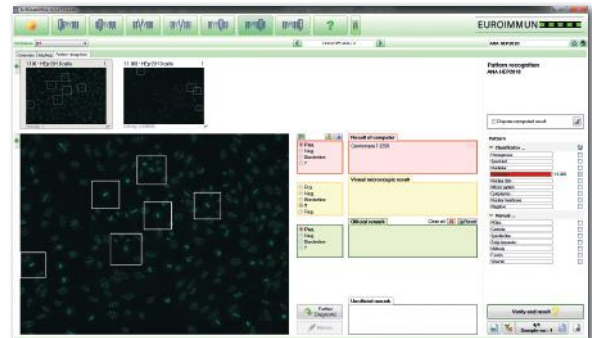
- Identification of pANCA, cANCA and atypical patterns
- Consolidation of results for ethanol- and formalin-fixed granulocytes and monospecific tests (MPO, PR3, GBM EUROPLUS) into one final report
- Titer calculation based on ethanol-fixed granulocytes

Antibodies against dsDNA

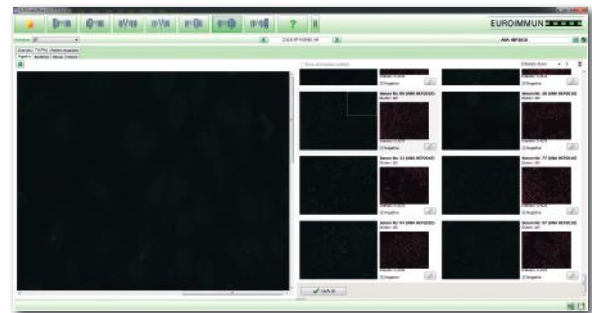
- Crithidia evaluation via the specific kinetoplast fluorescence (not simply dark-bright classification)

Further applications

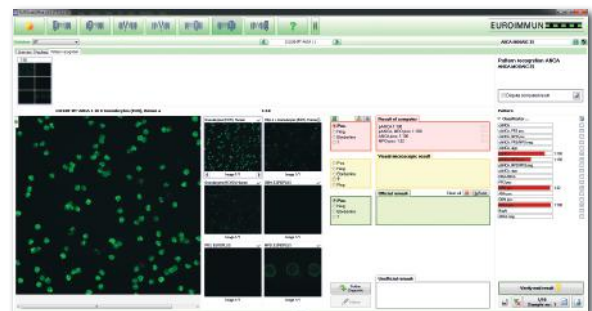
- Automatic image recording and on-screen diagnostics available for rat kidney (AMA + LKM), rat stomach (ASMA), rat liver (LKM + ANA), monkey liver (EmA + ANA), monkey oesophagus (EmA, desmosomes, epidermal basement membrane), transfected cells (neurology and nephrology) and infected cells (arbovirus)



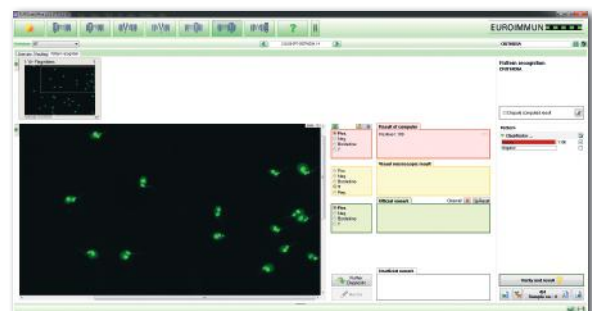
Verification of positive sera (ANA)



Verification of negative sera



Verification of positive sera (ANCA)



Verification of positive sera (anti-dsDNA)